



# Christ Church Cathedral and St Peter's Hamilton

52 Church Street, Newcastle  
148 Denison Street, Hamilton



*Welcome to worship today, especially all who are visiting*

*Weekly News Sunday 20 February 2022*

*Seventh Sunday after Epiphany*



*Joseph and his Brethren*

## Today's Services

**8am:** Eucharist

Presider: The Reverend Scott Dulley

Preacher: The Reverend Scott Dulley

**10.00am:** Eucharist

Presider: The Reverend Scott Dulley

Preacher: The Reverend Scott Dulley

**6.00pm:** Evensong

Officiant: The Reverend Mark Cooper

Preacher: The Reverend Mark Cooper

**You Tube:** <https://www.youtube.com/channel/UCXyas2uhJUNOnDetOpPdUOg>

**Facebook:** <https://www.facebook.com/christchurchcathedralnewcastle/>

## *Dear Parish Family,*

A short letter this week as I'm on holidays. I am very thankful for everyone who is ensuring the many aspects of our parish life continue over these next few weeks. I was thankful for our livestream on Sunday morning as I was able to join in worship with the Cathedral community from a distance.

I'm thankful to Canon Andrew Eaton who is covering Emergency pastoral care at this time. Canon Andrew's contact details are available on the Cathedral answering machine.

At our recent Parish Council meeting we set the date for our Parish Annual General Meeting. ***The Annual General Meeting of the Cathedral Parish will be on Sunday 20<sup>th</sup> March at 11.45am in the Cathedral.*** Nomination forms will be available closer to the date. Please send your reports to Sharon Dyett in the parish office.

It remains mandatory to wear face masks at worship. I know how challenging it is to wear a mask, especially in this humid weather. I remain very thankful that we are able to offer our livestream each Sunday morning:

<https://www.youtube.com/channel/UCXyas2uhJUNOnDetOpPdUOg>

### ***A little bit about what's happening:***

**ASH WEDNESDAY:** Ash Wednesday is Wednesday 2<sup>nd</sup> March. In the pewslip you will see the Mass times for that day. I encourage you to begin your Lenten journey by attending Mass and receiving the sign of ashes.

**LENTEN STUDY:** Our Parish Lenten Study will be the ABM book, *Repairing the Breach*. There is information in the pewslip about how to reserve your copy. There is also information in the pewslip about joining the online launch of the ABM Lent appeal, and learning directly about the work of our mission partners. I encourage you to register for this.

**CHOIR:** Have you visited the Choir YouTube channel recently?

[https://www.youtube.com/channel/UCj1uCQsfG7Ek4NLW\\_SJzvRQ](https://www.youtube.com/channel/UCj1uCQsfG7Ek4NLW_SJzvRQ) . Our choir blogger continues to provide prayerful and thought provoking reflections each week on Saturday afternoon <https://newcastlecathedralchoir.wordpress.com/>

Finally, this week's poem is by Lord Byron. I have not read a great deal of Byron's poetry, but am enjoying discovering it (and many other gems) over these days away. This poem struck me immediately, and I was not surprised to discover that it is one of his most famous poems. The inversion of beauty and the night, is striking, when so often beauty is synonymous with the day. The celebration of the mystery of both night and the woman, compared with "gaudy day" creates an evocative image. I am also struck that the subject of the poem is surrounded by this aura of beauty, which creates a sense that beauty springs forth in her wake. For me it is a reminder of the beauty in all things, especially those less celebrated.

### **She Walks in Beauty**

She walks in beauty, like the night  
Of cloudless climes and starry skies;  
And all that's best of dark and bright  
Meet in her aspect and her eyes;  
Thus mellowed to that tender light  
Which heaven to gaudy day denies.

One shade the more, one ray the less,  
Had half impaired the nameless grace  
Which waves in every raven tress,  
Or softly lightens o'er her face;  
Where thoughts serenely sweet express,  
How pure, how dear their dwelling-place.

And on that cheek, and o'er that brow,  
So soft, so calm, yet eloquent,  
The smiles that win, the tints that glow,  
But tell of days in goodness spent,  
A mind at peace with all below,  
A heart whose love is innocent!

Lord Byron 1788-1824

**With my thanks and prayers.**

**Dean Katherine**

*Ps: Please share this email with others who would like to hear news of the parish.  
To receive our weekly mailings, please contact the Cathedral Office  
[cathedral@newcastlecathedral.org.au](mailto:cathedral@newcastlecathedral.org.au) to be placed on the email or mail out list.*

# Music this Sunday

**Sunday, 20<sup>th</sup>  
February**

*7<sup>th</sup> Sunday after Epiphany*

**8am Eucharist**

**Hymns**

89, 648, 540, 152

**Organist**

Peter Guy

**10am Choral Eucharist**

**Setting**

Newcastle Mass (Guy)

**Psalm**

37: 1-11, 40-41 (said)

**Postlude**

Improvisation No. 7 (Saint-Saëns)

**Hymns**

89, 648, 540, 152

**Organist**

Peter Guy

**6pm Evensong**

**Rite**

APBA

**Responses**

Ferial

**Canticles**

To Chant

**Psalm**

37: 23-35 (Chant: Garrett)

**Postlude**

*Allegro Moderato* from

Trio Sonata No 1 in E flat (JS Bach)

**Hymns**

201, 440, 562, 215

**Organist**

Peter Guy

**AN INVITATION TO JOIN an ADFAS Lecture ...**

David Banney is giving a lecture on “Symmetry in Art, Craft and Graphic Design with Lessons from the Japanese Puffer Fish” at Christ Church Cathedral on 28<sup>th</sup> February 2022 at 6.30pm.

Symmetry is one of the fundamental organising principles of the universe - so pervasive that we tend to take it for granted. But, consciously or subconsciously, symmetries and broken symmetries influence our behaviour. From finding a mate to selling products, symmetry is always lurking in the background, and this lecture examines the fascinating roles of symmetry in the visual world.



David Banney - Symmetry in Art, Craft and Graphic Design

*If you would like to attend, please contact Judy Wotton.*



## Dear Sisters of Faith,

The Ecumenical and Interfaith Council would like to invite you to join us for the Sisters of Faith Dinner, in the past few years we have not been able to gather but rather than postpone again this year we are going to have a virtual dinner gathering.

**Tuesday 08 March 6.00 pm to 8.00 pm via Zoom**

Our theme: Women and their faith

Guest Speakers:

- Diana Rah, Muslim Community
- Louise Campbell, Aboriginal Community

An opportunity to for all women of faith to join together. You are invited to share a virtual dinner together, as we join with our sisters in the virtual space.

**[Registration is open now](#)**

<https://www.eventbrite.com.au/e/celebrating-sisters-in-faith-dinner-registration-266440399407?utm-campaign=social%2Cemail&utm-content=attendeeshare&utm-medium=discovery&utm-source=strongmail&utm-term=listing>

Please feel free to share the invite with others women in your network.

Thank you,

**ALYSON SEGROTT**

PROJECT COORDINATOR - PASTORAL MINISTRIES, DIOCESE OF MAITLAND - NEWCASTLE

P 02 4979 1117 F 02 4979 1119 M 0405 498 805

841 Hunter St Newcastle West NSW 2302 | PO Box 780 Newcastle NSW 2300

Email [Alyson.Segrott@mn.catholic.org.au](mailto:Alyson.Segrott@mn.catholic.org.au) Visit us online [www.mn.catholic.org.au](http://www.mn.catholic.org.au)



\*\*\*\*\*

We are in the country of the Worimi, Gamilleroi, Wanarua, Gweagul, Darkinjung, Biripi and Awabakal peoples. We respectfully acknowledge their Elders, celebrate their continuing culture and the living memory of their ancestors.

**On Sundays 20<sup>th</sup> February  
and 27<sup>th</sup> February, there will be no 7.00am  
Eucharist at the Cathedral.**

**SERVICES NEXT SUNDAY 27 FEBRUARY  
AT THE CATHEDRAL**

***Eighth Sunday after Epiphany***

**8am: Eucharist**

Presider: *The Reverend Ruth Brand*

Preacher: *The Reverend Dr Julia Perry*

**10.00am: Eucharist**

Presider: *The Reverend Dr Julia Perry*

Preacher: *The Reverend Dr Julia Perry*

**6.00pm: Evensong**

Officiant: *The Reverend Stephen Williams*

Preacher: *The Reverend Stephen Williams*

**SERVICES DURING THE WEEK IN THE CATHEDRAL**

**All services in the St Christopher Chapel. Please enter through the transept doors.**

Monday 21 February	8.00am - Morning Prayer	Fr Mel Nelson
	8.30am - Eucharist	
Tuesday 22 February	8.00am - Morning Prayer	The Reverend Dr Julia Perry
	8.30am - Eucharist	
Wednesday 23 February	8.00am - Morning Prayer	The Bishop
	8.30am - Eucharist	
Thursday 24 February	8.00am - Morning Prayer	The Rev'd Canon Garry Dodd
	8.30am - Eucharist	
Friday 25 February	8.00am - Morning Prayer	CANCELLED
	8.30am - Eucharist	

# ANNUAL GENERAL MEETING



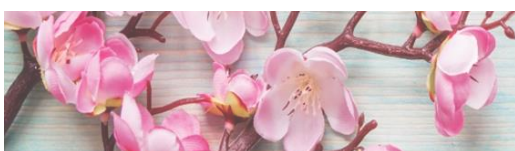
THE ANNUAL GENERAL MEETING OF THE  
CATHEDRAL PARISH WILL BE ON  
SUNDAY 20TH MARCH 2022 AT 11.45AM  
IN CHRIST CHURCH CATHEDRAL NEWCASTLE



## ***Donations for Flowers***

***To donate flowers in memory of a loved one or as a thank-offering,  
please advise Suzanne Evans on 4955 9170 and place your donation  
in an envelope listing the date for display and include a message  
and place in the wall safe.***

***Flowers are required for Easter Day, April 24 and 31.***



# ASH WEDNESDAY 2ND MARCH 2022



CHRIST CHURCH CATHEDRAL  
8.30AM; 6.00PM

ST PETER'S HAMILTON  
11.00AM

*Come, receive the sign of ashes.*

**EUCCHARISTS at CHRIST CHURCH CATHEDRAL  
and ST PETER'S HAMILTON**

**CATHEDRAL**

**Sunday 8.00am and 10.00am**

**Monday – Friday 8.30am**

**ST PETER'S**

**Tuesday and Thursday 11.00am**



# SHROVE TUESDAY

TUESDAY 1ST OF MARCH

CHURCH OF THE GOOD SHEPHERD

101 JOSLIN STREET KOTARA

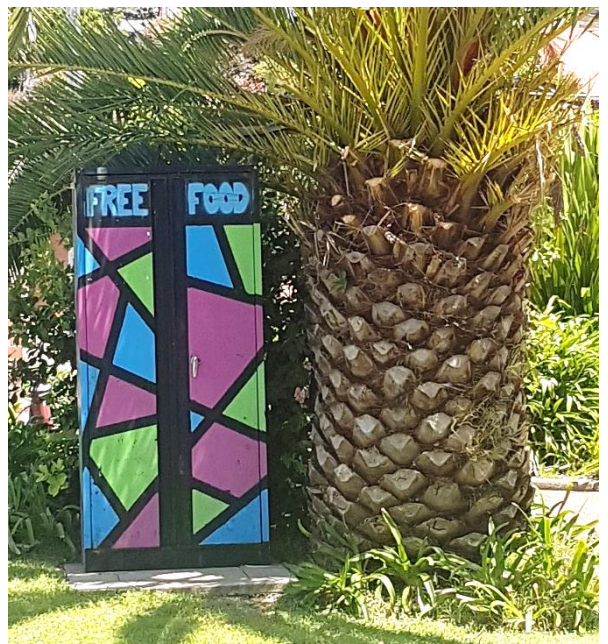
@ 6PM



## The Parish Pantry has moved!

Thanks to Veronica and Matt and everyone who helped move, clean, and repair the parish pantry. In the new position it's more accessible with better lighting.

*Thanks for your support!*



# Assets Register

## **High Altar Cross - IHC Medallion by Gawthorp of London**

**Inscribed: "Sacred to the Memory of LFN, 24.1.1902**

**Thou shalt shew me the Paten of Life"**

*Artist – TG & Walter E Gawthorp, 16 Long Acre, London WC2*



The large brass Altar Cross set above the reredos in the rood at the High Altar. The cross is of Bottonee design, with a large central medallion with the letters **IHC**. The four evangelists are symbolically represented in the four decorative medallions placed at the outer edge of each axis of the cross.

The hexagonal base has shouldered stepped edges rising to a cylindrical stem with a large bladed flange and several smaller flanges separately located along the shaft. It is approximately 800mm high (unable to access – too high to climb) mounted in place – unable to be removed.

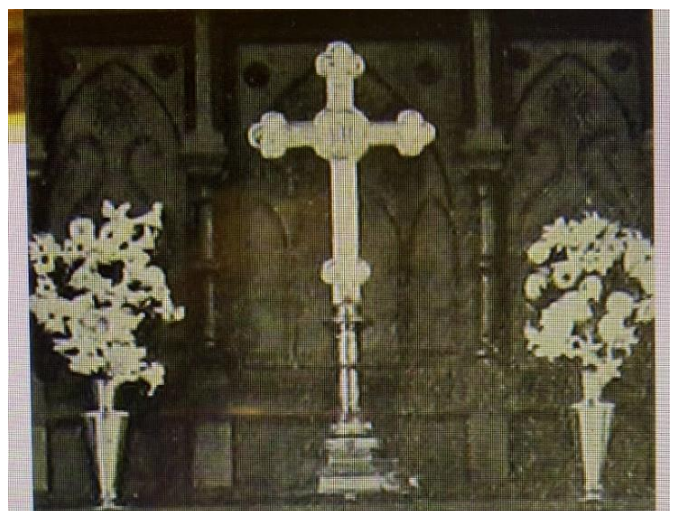


The age of this item indicates historic significance. The earliest photograph available from the Mitchell Library Collection shows the cross on the altar of the Cathedral in 1902/3. It has been on the altar since the current building was first occupied in 1902. It is one of the largest altar crosses in the Cathedral and is in the most prominent position in the Cathedral. It was unable to be examined at close range to locate other markings. This is a beautifully made hand finished repousse brass cross of very high-quality, from a firm with an enviable reputation in London at the time this item was supplied.

T J Gawthorp (about 1886) T G & Walter E Gawthorp were a three generation art metal working business which by 1900 had incorporated the long established 1810 firm of Edward Mathews and Co. They were an extremely reputable company renowned for high quality art metal particularly memorials and ecclesiastical commissions. The three Gawthorps (T J, TG & WE) wrote (and updated) a well regarded illustrated textbook *The Art of Brass Repousse*, still available (now available on-line) as a text on metal chasing and fine art and craft repousse metalware production.

TE Gawthorp wrote another book; *Lamps and Shades in Metal and Art Glass* in 1914. Walter E Gawthorp was admitted as a Fellow of the Society of Antiquaries of both England and Scotland in March 1910. In 1916, the London Supplement (4.1.1916) reported that Walter E Gawthorp was appointed as a supplier to HM King Edward VII and had authority to display the Royal Arms on his documents and products.

The firm was taken over in 1936 by Wippell, another art metal workshop, which supplied items in Christ Church Cathedral, including the Book Missal in the Warriors Chapel donated by Sydney Wansey.\*



Above Right: The same cross shown on the first Christ Church High Altar Circa 1902. From the souvenir booklet launched in 1910, **"Newcastle Cathedral 1812-1910, Souvenir of the Dedication of the Chancel Ambulatories & Chapel of St Nicholas. March 9, 1910."** From the Collection of the State Library of NSW - Mitchell Library Sydney: image cropped and enhanced by BP Orrock.

\*Extract from *The Artists and Artisans of the Cathedral Church of Christ the King* – Bronwyn Orrock

# CATHEDRAL COMMUNITY LUNCHEES

The Cathedral Community Lunches Program is continuing to offer a hot meal **every second Sunday at 12.30pm** as a **'take away'** option from the Horbury Hunt Hall. **Thankyou** to the dedicated volunteers who are ensuring this important outreach program continues to operate.

***The next Community lunch for 2022 will be Sunday, 27 February.***

# CCC SPIRITUALITY GROUP

We will be using the  
ABM Study book for Lent

**Please contact the Parish Office for further information about 2022 material.**



## Stewardship:

Thank you for your ongoing faithful financial support of the mission and ministry of the parish. With no opportunities for additional fund raising, your giving is greatly appreciated. In this time, the best way to exercise our stewardship, to support the work of the parish, is through electronic giving. Our stewardship is an expression of our thankfulness to God, offering as we have received.

**Name: Electronic Giving Account BSB: 705-077 Account: 00040917**  
(please include all 8 digits)

Please include your Initial & Surname in the reference line, if required.

Please ask the siderspersons at the Cathedral or St Peter's if you would like a set of stewardship envelopes. If you would like information on how you can contribute to the Music Fund, Missions, and other ministries, please contact the parish office so we can share those details with you. Thank you for your generosity, which supports ministry now and in the future.



## Mission News



Join ABM supporters from across the country to learn how your support of our 2022 Lent Appeal to bring love, hope and justice to communities in Australia and overseas who are in need during this pandemic.

The 2022 national online Lent Appeal Launch to be hosted by the Dean of Brisbane, the Very Reverend Dr Peter Catt.

**Date:** Tuesday 1 March

**Time:** 12noon (WA), 2pm (Qld, NT), 2.30pm (SA), 3pm (NSW, ACT, Vic, Tas)

**Duration:** 1 hr, including Q&A

**RSVP:** by Friday 25 February to [info@abmission.org.au](mailto:info@abmission.org.au) or phone 1300 302663  
A Zoom link will be sent out the day before the event with information on how to join.



Hear from Prime Bishop of the Episcopal Church of the Philippines, the Most Rev Brent Alawas about their plans for helping communities transform themselves out of poverty. The Most Rev Hosam Naoum, Archbishop of the Episcopal Diocese of Jerusalem, will then share their plans to better serve the needy in their communities by improving their Church-run community service organisations. Finally, Aunty Dr McRose (Rose) Elu and Rt Rev Keith Joseph will take on us a journey of discovery as they share how the first Coming of the Light continues to inspire the church in the Torres Strait today and across Australia.

## EMERGENCY APPEAL FOR TONGA

Tue 18 Jan 2022



**Donate Now**

ABM AID has mounted an emergency appeal for the people of Tonga, following the volcanic eruptions and tsunami waves which hit on Saturday, 15 January.

We have been on the phone with Pacific partners, including Anglican Missions New Zealand, to obtain a clearer picture of the situation.

Electricity and mobile phone networks have been re-established on the main island of Tongatapu, but communications with the outer islands are intermittent.

A joint effort between the New Zealand and Australian Government has sent flights to Tonga to conduct survey reconnaissance to collect aerial data on the impacts of the volcanic ash and tsunami in Tonga.

The Tongan Navy has reported major damage in the Ha'apai group where waves were estimated to be 5-10 metres in height, reaching 500 metres inland. Pending assessments, damage in the northern more isolated islands could be significant and would likely include contaminated water and food supplies as a result of ashfall as well as damage to buildings and crops caused by flooding.





*Prepositioned supplies in four Anglican Churches in Nuku'alofa. © Anglican Missions NZ. Used with permission.*



*Prepositioned supplies in four Anglican Churches in Nuku'alofa. © Anglican Missions NZ. Used with permission.*

Anglican Missions NZ had previously ensured that NZD 80,000 worth of pre-positioned emergency supplies were in place at four Anglican churches in Nuku'alofa. Funds raised will first be used to replenish this stock, and to respond to other initial requests. Maintaining the pre-positioned supplies is especially important during the cyclone season. Other activities will depend on an assessment of needs which should be available over the next few days.

All funds raised by AID will go to Anglican Missions who are working closely with the Anglican Diocese of Polynesia.

We will provide updates as they come in, on our website and on our Facebook page. You can donate to this appeal now.

### **PRAYER FOR TONGA**

Loving God,  
We pray for the people of Tonga,  
for all affected by the volcano and tsunami,  
for those who have died or lost loved ones, for those who have been injured, for those who have lost homes and livelihoods.

We pray that their urgent needs may be met,  
that nations will be generous in showing their support,  
and that they will be resilient in the face of crisis.

We pray too that communications may soon be restored.  
This we ask in the name of Jesus, your son, our Lord.

Amen

**Donate Now**

## HOW TO DONATE

**Donations to this appeal are tax deductible.**

**Online:** You can make an online donation to the EMERGENCY APPEAL FOR TONGA by clicking on the **DONATE NOW** button above.

**Mail:** you can enclose a cheque/money order (made out to the Anglicans in Development). Please include the campaign name EMERGENCY APPEAL FOR TONGA with your donation) and send it to:

Anglicans in Development Ltd<sup>[1]</sup>  
Westpac BSB: 032135 / Account 691271

**Telephone:** Sydney 02 9264 1021, Local Call 1300 302 663

**Email:** [info@abmission.org.au](mailto:info@abmission.org.au)

Local Call: 1300 302663  
International: +61 2 9264 1021  
Enquiries: [info@abmission.org.au](mailto:info@abmission.org.au)



ACFID  
MEMBER

Postal address:

**Anglican Board of Mission — Australia**

Locked Bag Q4005  
Queen Victoria Building  
NSW 1230

**Join our Community**

**SUBSCRIBE  
TO OUR E-NEWS**

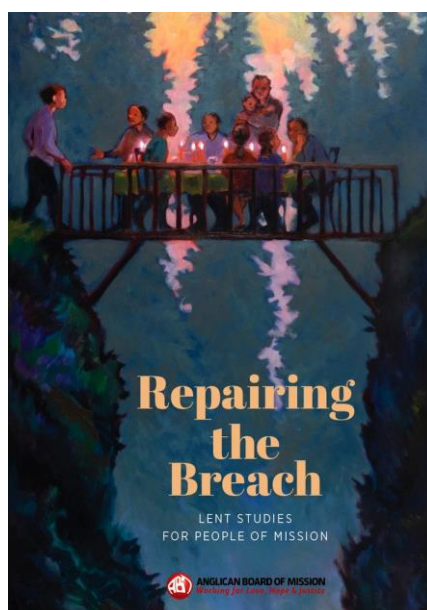
[Accessibility](#) | [Privacy Policy](#) | [Complaints Procedure](#) |

**On-line giving –  
Name: Missions Account  
BSB: 705-077 Account: 00041087**

*Please remember if you can spare a little, we are still asking for donations to our FREE FOOD PANTRY at the Cathedral and also collecting for the Samaritans. Any long life non-perishable items will be very thankfully received.*



# LENT STUDY 2022



Our Lenten Study for 2022 will be the ABM Study, *Repairing the Breach*.

About *Repairing the Breach*:

"'Repairing the Breach' examines what it means to be people of healing in a broken world.

Written by a community of friends for a people of mission - and illustrated with stunning images painted by acclaimed artist, Carol Aust, 'Repairing the Breach' inspires, provokes and cajoles.

The Mission of God is to repair the breach. The people of God are participants in that work.

All breach-repair is relational.

All breaches need to be recognised. They need to be understood. It is only in understanding and experiencing the breach that we can begin to see the way it can be repaired. It can be all too easy to see a problem and know how you would fix it. But all problems are complex, and your 'fix' or my 'fix' might exacerbate the issue, rather than repair. Meeting in the middle of the breach, sitting in the breach in order to understand the perspectives and fears and hopes of those who are most effected by the breach, and then acting together to repair what has been understood...that is the work of relational mission.

This can happen in our own relationships and in our churches. It can happen between the rich and the poor. The powerless and the powerful. The forgotten and the forgetters. It must happen if God's vision of a reconciled and just world is to be realised."

Copies of the Study are \$11, and will be available from the Parish Office closer to Lent. Please contact the Parish Office if you would like to reserve a copy.



## **Return to Worship 2022**

### **WELCOME BACK, WELCOME HOME**

- Please remember to maintain social-distancing inside and outside our church buildings.

### **REGISTERING ATTENDANCE**

- Please use the QR Code to register your attendance.
- After scanning the QR code, please show the green tick to the sidesperson, who will invite you to take an order of service.
- If you are not using the QR code, please identify yourself to the sidesperson, who will record your name and phone number (in accordance with NSW Health regulations).

### **ENTERING THE CHURCH**

- The Public Health Order requires masks to be worn in places of worship.
- Social distancing is to be maintained when seated, with 1 person per 2 square metres, except for family groups.

### **HOLY COMMUNION**

- Holy Communion will be administered in one kind (no chalice)
- Holy Communion will be distributed at Nave Sanctuary steps.
- Please remain in your pew until an usher invites you to come forward for Holy Communion and please maintain social distancing in the aisle.
- Please remove your face mask just before you receive Holy Communion.

### **SINGING**

- At this stage, only Sunday services at the Cathedral will have congregational singing.

### **WEEKDAY SERVICES**

- Weekday Eucharists have recommenced at the Cathedral and St Peter's, subject to all of the regulations listed above. Service times are listed in the pewslip.
- Entrance to all weekday services at the Cathedral will be through the St Christopher transept door (opposite the middle driveway).

## ONLINE SERVICES THIS WEEK

The Weekly and mid-week Eucharists and the Morning and Evening offices continue to be distributed online via **You Tube** and **Facebook** at **6.00am** and **5.30pm** each day.

We encourage you to share these resources widely during this time.

**You Tube:** <https://www.youtube.com/channel/UCXyas2uhJUNOnDetOpPdUOg>

**Facebook:** <https://www.facebook.com/christchurchcathedralnewcastle/>

Monday 21 February	6.00am 5.30pm	The Very Reverend Katherine Bowyer The Reverend Amanda Brockwell
Tuesday 22 February	6.00am 5.30pm	The Reverend Angela Peverell The Reverend Kate Heath
Wednesday 23 February	6.00am 5.30pm	Archdeacon Arthur Copeman The Very Reverend Katherine Bowyer
Thursday 24 February <i>Matthias</i>	6.00am 5.30pm	The Reverend Dr Julia Perry The Reverend Sarah Dulley
Friday 25 February	6.00am 5.30pm	The Reverend Scott Dulley The Reverend Canon Andrew Eaton
Saturday 26 February	6.00am 5.30pm	The Reverend Canon Garry Dodd The Reverend Scott Dulley

***We have taken measures to ensure that the Cathedral is a safe environment for all.***

***All who work with children or youth have completed Safe Ministry Training and all clergy, staff and volunteers are subject to strict employment measures such as working with children checks. The Cathedral is committed to being a place where survivors of abuse experience care and support. For a confidential discussion, please call or email the***

***Director of Professional Standards 1800 774 945***

***[dps@newcastleanglican.org.au](mailto:dps@newcastleanglican.org.au) or [survivorsupport@newcastleanglican.org.au](mailto:survivorsupport@newcastleanglican.org.au)***

## CLERGY

### DEAN OF NEWCASTLE

The Very Reverend Katherine Bowyer  
[katherinebowyer@newcastleanglican.org.au](mailto:katherinebowyer@newcastleanglican.org.au)  
0407 201 693

### PRIEST AT ST PETER'S, HAMILTON

148 Denison Street  
The Very Reverend Katherine Bowyer  
[katherinebowyer@newcastleanglican.org.au](mailto:katherinebowyer@newcastleanglican.org.au)  
0407 201 693

## OFFICE

PO Box 221 NEWCASTLE NSW 2300  
Email: [cathedral@newcastlecathedral.org.au](mailto:cathedral@newcastlecathedral.org.au)  
Website: [www.newcastlecathedral.org.au](http://www.newcastlecathedral.org.au)  
Ph: 4929 2052  
**OFFICE HOURS:** Tue-Thurs: 9.30am–4.00pm, Fri: 9.30am-1.00pm  
**Office Administrator:** Sharon Dyett

## STAFF

**Dean's Verger:** Matthew Whatson  
**Director of Music:** Peter Guy  
[music@newcastlecathedral.org.au](mailto:music@newcastlecathedral.org.au) 0419 239 828  
**Family Ministry Co-ordinator:** Veronica Butcher  
[familyministry@newcastlecathedral.org.au](mailto:familyministry@newcastlecathedral.org.au) or phone: 0482 027 207

## WARDENS

**Dean's:** David Atherton  
**People's:** Peter Smith, Graham Vimpani & Pamela Brydges



@newycathedral